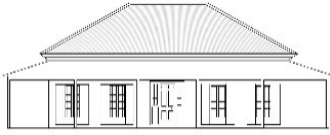


The Henry and William Williams Memorial Museum Trust

NEWSLETTER #12



williamsdescendants@gmail.com

October 2022

Cancellation of Open Day

We customarily hold an Open Day at the Retreat in spring for people to enjoy the garden and see the exterior of this important heritage house. It is also a fundraising exercise for the on-going maintenance work. So it is disappointing to report that we have to cancel the Open Day this year as the grounds have been badly affected by the wet winter, heavy flooding and storm damage. Instead we hope to hold a working bee on Sunday 6 November so any family members in the Bay of Islands area would be very welcome to join us.

Visiting the Retreat during the 2023 Family Reunion 13-16 April 2023

However we are hoping that hundreds of family members will visit the property during the bicentennial of the Williams family arrival in NZ. The Retreat will be open every day during the Reunion and visits are included as part of your registration fee. The full programme for the Reunion and the Retreat hours are on the website www.williams2023.co.nz .

An exhibition about the early days of Paihia and the Williams family is opening at the Waitangi Museum in mid-December and will run for six months. This includes items owned by our Trust, other museums and by family members. Don't miss visiting this fascinating exhibition, the research for which has been done by three of our trustees.

Retreat restoration and garden work

The replacement of the wrap-around verandah at the end of 2021 is a wonderful improvement to the appearance and safety of the house. Grateful thanks to Rosemary and Brian Hedge for making this happen.

Small maintenance jobs have been completed in the house in the last 12 months but our main attention has been on the garden. We hope to have the 'stumpery' and other new areas open in time for the Reunion despite the winter problems.

Trustees News

In March this year we were delighted to welcome Michael Ludbrook as a new trustee. Michael, who lives in Kerikeri, is a Henry descendant through Caroline Williams who married Samuel Ludbrook.

Sadly we report the death last month of Charlotte Williams in Wellington, daughter of Dr Morvyn (Tim) Williams. Charlotte chaired the Museum Trust from 2003 to 2013, an important period of the Trust's history when we purchased the leasehold, finally getting full possession of the property.

Website

Please visit the museum website (www.williamsmuseum.org) to view material that has been added recently. Apologies for gaps, due to pressure of work for the Reunion and the Waitangi exhibition.

***John Andrews (Chairman), Dan Williams, Priscilla Williams, Kirsty McGill,
Camilla Hope-Simcock, Tina Angelova, Heather Stanley and Michael Ludbrook***
Trustees for the Henry and William Williams Memorial Museum Trust